



# DAE Pumps

Designed And Engineered Pumping Solutions

**VISIT SITE NOW »**

## Growler 1000

**4-in Hydraulic Dredge Pump  
with 2 Side Agitators**



**DAEPUMPS.COM**

info@daepumps.com

(760) 821-8112

[VISIT SITE NOW >>](#)

## GROWLER 1000 4-in Hydraulic Dredge Pump with 2 Side Agitators

The DAE Pumps Growler 1000 Hydraulic Dredge Pump with 2 Side Agitators is a highly durable and reliable dredge pump for transporting solids and a variety of other materials.

Built with two heavy-duty excavator-grade agitators. The industry's top dredge pump can move up to 13-58 cubic yards of solids per hour between 185 to 792 GPM. The DAE Pumps Growler 1000 provides non-clogging suction power to excavate and pump some of the most challenging dredging situations.

The suction power of the mighty pump can handle solids up to 1.25-in moving up to 70% solids by weight through a 4-inch discharge.



4-Inch  
Pump



185 - 792  
GPM



2 Side  
Agitators



Solids  
Handling  
up to 1.255 in



Up to 70%  
Solids by  
Weight



Highly  
Durable  
Abrasion  
Resistant



Over 150 Ft  
Head



Interchangeable  
Hard Tooth  
Cutter Heads



Robust Motor  
for Strong  
Torque

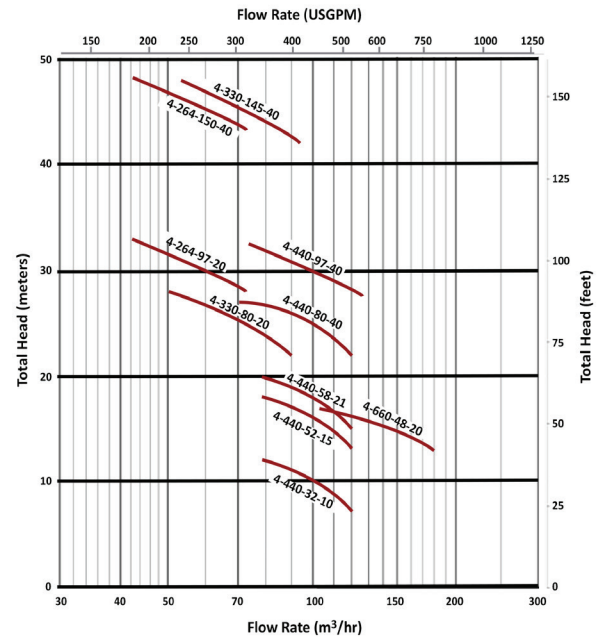
[VISIT SITE NOW >>](#)

**VISIT SITE NOW >>**

## 4-in Growler 1000 Pump Models

Model	GPM	Head (Ft)	HP	Yards <sup>3</sup> /Hour	Hydraulic Oil	
					Pressure (PSI)	Flow (GPM)
Growler 1000-4-264-97-20	185	106	20	13	3200	11
	264	97		19		
	317	87		23		
Growler 1000-4-264-150-40	185	159	40	13	3400	21
	264	150		19		
	317	140		23		
Growler 1000-4-330-80-20	229	90	20	17	3200	11
	330	80		24		
	396	71		29		
Growler 1000-4-330-145-40	229	154	40	17	3400	21
	330	145		24		
	396	135		29		
Growler 1000-4-440-32-10	308	39	10	22	1500	10
	440	32		32		
	528	25		39		
Growler 1000-4-440-52-15	308	59	15	22	2320	11
	440	52		32		
	528	45		39		
Growler 1000-4-440-58-21	308	64	21	22	3200	11
	440	58		32		
	528	48		39		
Growler 1000-4-440-80-40	308	90	40	22	2500	21
	440	80		32		
	528	71		39		
Growler 1000-4-440-97-40	308	106	40	22	2500	21
	440	97		32		
	528	84		39		
Growler 1000-4-440-97-40	462	55	20	34	2500	17
	660	48		49		
	792	43		59		

### Pump Curve



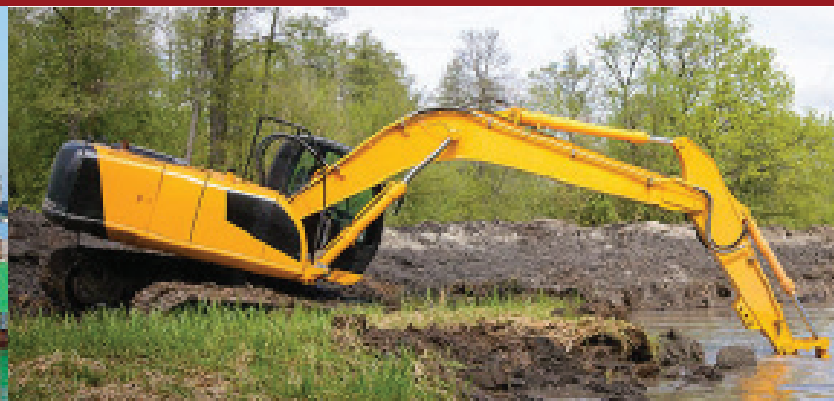
### Side Agitators

Power Options	Hydraulic Oil	
	Pressure (PSI)	Flow (GPM)
5 HP	2900	7
7.5 HP	3190	8

### Cable Deployed Dredge Pump



### Excavator Mounted Dredge Pump



**VISIT SITE NOW >>**





**VISIT SITE NOW »»**

## HYDRAULIC SLURRY PUMPS

Durable Hydraulic slurry pumps. Versatile and rugged solution for the transfer of abrasive and high-density slurries in mining, civil construction, industry, and other heavy-duty applications.

### Versatile Heavy Duty Solution

Growler 1000 series are heavy-duty, hydraulic submersible slurry pumps designed to handle a wide range of slurries and abrasive particles in submersible applications in mining and industry.

Growler pumps feature a rugged construction using the highest quality materials to ensure reliable performance and excellent service life. The high-quality hydraulic motors incorporate multiple protection features to detect the ingress of water or excessive temperatures to shut off the pump and prevent damage.

### Large Cut Water Clearance

The pump casing features a large cut water clearance which allows the easy passage of large solids and reduces wear and erosion to improve service life and prevent loss of efficiency.

### Integral Agitator

The 27% chrome white iron agitator assists in pumping slurries by breaking up large particles and agitating high concentrations of solids.

### Heavy Duty Construction

The pump casing, impeller, backplate, and agitator are manufactured from high-quality 27% chrome white iron. This extremely tough construction material can withstand continuous use in heavy-duty applications and allows the pump to transfer abrasive and dense slurries with minimal wear. The pumps feature a replaceable back plate allowing for simple servicing and easy replacement of worn components.

### Motor Insulation

Motor insulation is used to ensure reliable operation in heavy-duty applications in temperatures up to +70 °C.

### Support Frame and Strainer

A heavy-duty mild steel frame with a round base and strainer provides excellent stability and durability whilst preventing blockages.



### Double Mechanical Seal

A double mechanical seal provides excellent shaft sealing between the hydraulic motor and the wet end. The seals are oil bath lubricated and feature carbon/ceramic seal faces in the wet end and tungsten ceramic faces in the drive end to provide excellent durability and service life across a wide range of duties and applications.

### Oil Chamber Leakage Probe

The oil chamber incorporates a water leakage probe which detects when the water-to-oil ratio is too high and automatically shuts down the motor to prevent damage.

### Motor Float Switch

A float switch is located in the bottom of the motor to detect the ingress of water and shut down the motor to prevent damage due to shorting out.

### Motor Temperature Sensors

Temperature sensors are located in the motor stator to detect excessive temperatures and can shut down the motor to prevent damage due to overheating.

### Thrust Bearing Sensors

Temperature and moisture sensors are located in the motor thrust bearings to detect excessive temperatures and the ingress of water and shut down the motor to prevent bearing failure.

### Optional External Cooling

Cooling jackets can be provided with an external water supply in high-temperature applications to keep the motor temperature down and prevent excessive stator and bearing damage.

**VISIT SITE NOW »»**