



# DAE Pumps

Designed And Engineered Pumping Solutions

**VISIT SITE NOW >>**

## Growler 1000

**3-in Hydraulic Dredge Pump  
with 2 Side Agitators**



**DAEPUMPS.COM**

info@daepumps.com

(760) 821-8112

[VISIT SITE NOW >>](#)

## GROWLER 1000 3-in Hydraulic Dredge Pump with 2 Side Agitators

The DAE Pumps Growler 1000 Hydraulic Dredge Pump with 2 Side Agitators is a highly durable and reliable dredge pump for transporting solids and a variety of other materials.

Built with two heavy-duty excavator-grade agitators. The industry's top dredge pump can move up to 15-95 cubic yards of solids per hour between 79 to 395 GPM. The DAE Pumps Growler 1000 provides non-clogging suction power to excavate and pump some of the most challenging dredging situations.

The suction power of the mighty pump can handle solids up to 0.5-in moving up to 70% solids by weight through a 3-in discharge.



**3-Inch  
Pump**



**79 - 395  
GPM**



**2 Side  
Agitators**



**Solids  
Handling  
up to .5 in**



**Up to 70%  
Solids by  
Weight**



**Highly  
Durable  
Abrasion  
Resistant**



**Over 130 Ft  
Head**



**Interchangeable  
Hard Tooth  
Cutter Heads**



**Robust Motor  
for Strong  
Torque**

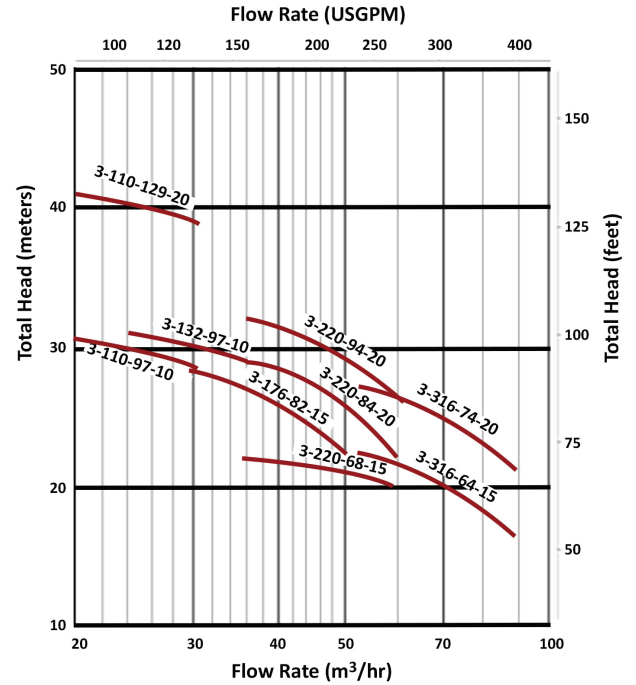
[VISIT SITE NOW >>](#)

**VISIT SITE NOW >>**

## 3-in Growler 1000 Pump Models

Model	GPM	Head (Ft)	HP	Yards <sup>3</sup> / Hour	Hydraulic Oil	
					Pressure (PSI)	Flow (GPM)
Growler 1000-3-110-97-10	79	106	10	5	1450	9
	110	97		8		
	132	84		9		
Growler 1000-3-110-129-20	79	132	20	5	3200	11
	110	129		8		
	132	126		9		
Growler 1000-3-132-97-10	106	106	10	7	1450	9
	132	97		9		
	158	84		11		
Growler 1000-3-178-82-15	132	91	15	9	2320	11
	178	82		13		
	220	75		16		
Growler 1000-3-220-68-15	154	71	15	11	2320	11
	220	68		16		
	264	64		19		
Growler 1000-3-220-84-20	154	93	20	11	3200	11
	220	84		16		
	264	77		19		
Growler 1000-3-220-94-20	154	103	20	11	3200	11
	220	94		16		
	264	87		19		
Growler 1000-3-316-64-15	238	73	15	17	2320	11
	316	64		23		
	395	57		29		
Growler 1000-3-316-74-20	238	83	20	17	3200	11
	316	74		23		
	395	67		29		

### Pump Curve



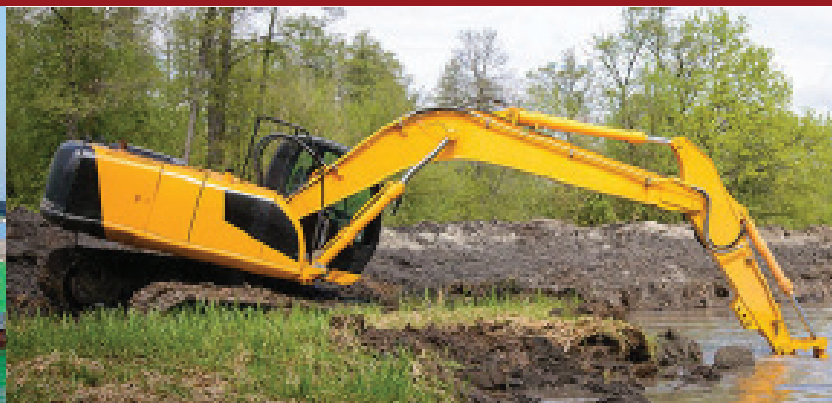
### Side Agitators

Power Options	Hydraulic Oil	
	Pressure (PSI)	Flow (GPM)
5 HP	2900	7
7.5 HP	3190	8

### Cable Deployed Dredge Pump



### Excavator Mounted Dredge Pump



**VISIT SITE NOW >>**





**VISIT SITE NOW »**

## HYDRAULIC SLURRY PUMPS

Durable Hydraulic slurry pumps. Versatile and rugged solution for the transfer of abrasive and high-density slurries in mining, civil construction, industry, and other heavy-duty applications.

### Versatile Heavy Duty Solution

Growler 1000 series are heavy-duty, hydraulic submersible slurry pumps designed to handle a wide range of slurries and abrasive particles in submersible applications in mining and industry.

Growler pumps feature a rugged construction using the highest quality materials to ensure reliable performance and excellent service life. The high-quality hydraulic motors incorporate multiple protection features to detect the ingress of water or excessive temperatures to shut off the pump and prevent damage.

### Large Cut Water Clearance

The pump casing features a large cut water clearance which allows the easy passage of large solids and reduces wear and erosion to improve service life and prevent loss of efficiency.

### Integral Agitator

The 27% chrome white iron agitator assists in pumping slurries by breaking up large particles and agitating high concentrations of solids.

### Heavy Duty Construction

The pump casing, impeller, backplate, and agitator are manufactured from high-quality 27% chrome white iron. This extremely tough construction material can withstand continuous use in heavy-duty applications and allows the pump to transfer abrasive and dense slurries with minimal wear. The pumps feature a replaceable back plate allowing for simple servicing and easy replacement of worn components.

### Motor Insulation

Motor insulation is used to ensure reliable operation in heavy-duty applications in temperatures up to +70 °C.

### Support Frame and Strainer

A heavy-duty mild steel frame with a round base and strainer provides excellent stability and durability whilst preventing blockages.



### Double Mechanical Seal

A double mechanical seal provides excellent shaft sealing between the hydraulic motor and the wet end. The seals are oil bath lubricated and feature carbon/ceramic seal faces in the wet end and tungsten ceramic faces in the drive end to provide excellent durability and service life across a wide range of duties and applications.

### Oil Chamber Leakage Probe

The oil chamber incorporates a water leakage probe which detects when the water-to-oil ratio is too high and automatically shuts down the motor to prevent damage.

### Motor Float Switch

A float switch is located in the bottom of the motor to detect the ingress of water and shut down the motor to prevent damage due to shorting out.

### Motor Temperature Sensors

Temperature sensors are located in the motor stator to detect excessive temperatures and can shut down the motor to prevent damage due to overheating.

### Thrust Bearing Sensors

Temperature and moisture sensors are located in the motor thrust bearings to detect excessive temperatures and the ingress of water and shut down the motor to prevent bearing failure.

### Optional External Cooling

Cooling jackets can be provided with an external water supply in high-temperature applications to keep the motor temperature down and prevent excessive stator and bearing damage.

**VISIT SITE NOW »**

