



# DAE Pumps

Designed And Engineered Pumping Solutions

**VISIT SITE NOW »**

## **Growler 1000**

**10-in Hydraulic Dredge Pump  
with 2 Side Agitators**



**DAEPUMPS.COM**

info@daepumps.com

(760) 821-8112

[VISIT SITE NOW >>](#)

## GROWLER 1000 10-in Hydraulic Dredge Pump with 2 Side Agitators

The DAE Pumps Growler 1000 Hydraulic Dredge Pump with 2 Side Agitators is a highly durable and reliable dredge pump for transporting solids and a variety of other materials.

Built with two heavy-duty excavator-grade agitators. The industry's top dredge pump can move up to 114-235 cubic yards of solids per hour between 1540 to 3168 GPM. The DAE Pumps Growler 3000 provides non-clogging suction power to excavate and pump some of the most challenging dredging situations.

The suction power of the mighty pump can handle solids up to 1.75-in moving up to 70% solids by weight through a 10-in discharge.



10-Inch  
Pump



1540 - 3168  
GPM



2 Side  
Agitators



Solids  
Handling  
up to 1.75 in



Up to 70%  
Solids by  
Weight



Highly  
Durable  
Abrasion  
Resistant



Over 185 Ft  
Head



Interchangeable  
Hard Tooth  
Cutter Heads



Robust Motor  
for Strong  
Torque

[VISIT SITE NOW >>](#)

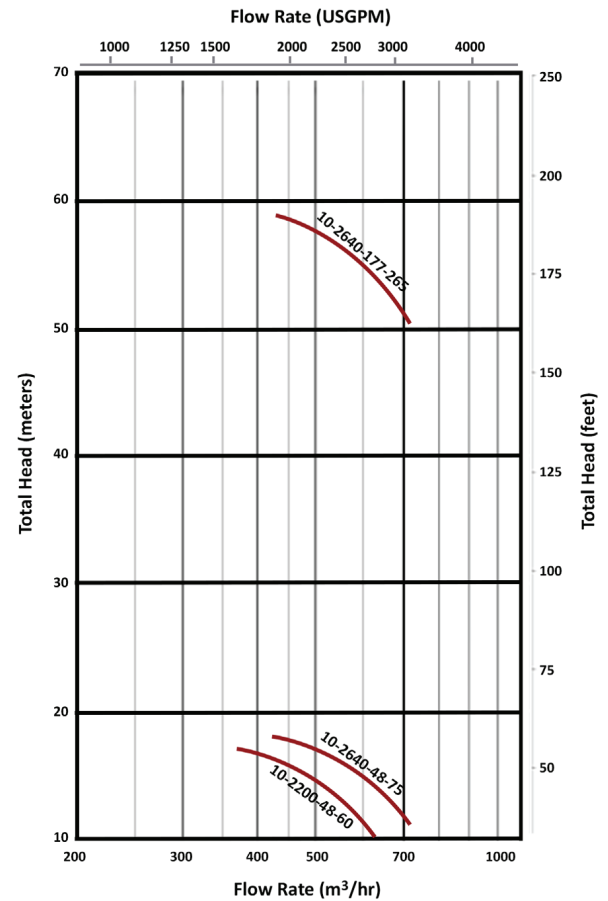
**VISIT SITE NOW >>**

## 10-in Growler 1000

### Pump Models

Model	GPM	Head (Ft)	HP	Yards <sup>3</sup> / Hour	Hydraulic Oil	
					Pressure (PSI)	Flow (GPM)
Growler 1000-10-2200-48-60	1540	55		114		
	2200	48	60	163	3200	35
	2640	42		196		
Growler 1000-10-2640-48-75	1848	55		137		
	2640	48	75	196	3920	35
	3168	42		235		
Growler 1000-10-2640-177-265	1848	190		137		
	2640	177	265	196	3500	132
	3168	167		235		

### Pump Curve



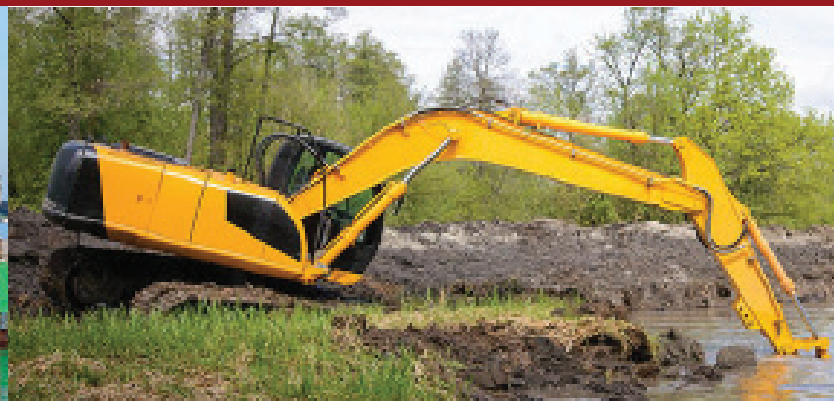
### Side Agitators

Power Options	Hydraulic Oil	
	Pressure (PSI)	Flow (GPM)
7.5 HP	3190	8
10 HP	3200	8
15 HP	3625	8
20 HP	4061	10

### Cable Deployed Dredge Pump



### Excavator Mounted Dredge Pump



**VISIT SITE NOW >>**

[VISIT SITE NOW >>](#)

## HYDRAULIC SLURRY PUMPS

Durable Hydraulic slurry pumps. Versatile and rugged solution for the transfer of abrasive and high-density slurries in mining, civil construction, industry, and other heavy-duty applications.

### Versatile Heavy Duty Solution

Growler 1000 series are heavy-duty, hydraulic submersible slurry pumps designed to handle a wide range of slurries and abrasive particles in submersible applications in mining and industry.

Growler pumps feature a rugged construction using the highest quality materials to ensure reliable performance and excellent service life. The high-quality hydraulic motors incorporate multiple protection features to detect the ingress of water or excessive temperatures to shut off the pump and prevent damage.

### Large Cut Water Clearance

The pump casing features a large cut water clearance which allows the easy passage of large solids and reduces wear and erosion to improve service life and prevent loss of efficiency.

### Integral Agitator

The 27% chrome white iron agitator assists in pumping slurries by breaking up large particles and agitating high concentrations of solids.

### Heavy Duty Construction

The pump casing, impeller, backplate, and agitator are manufactured from high-quality 27% chrome white iron. This extremely tough construction material can withstand continuous use in heavy-duty applications and allows the pump to transfer abrasive and dense slurries with minimal wear. The pumps feature a replaceable back plate allowing for simple servicing and easy replacement of worn components.

### Motor Insulation

Motor insulation is used to ensure reliable operation in heavy-duty applications in temperatures up to +70 °C.

### Support Frame and Strainer

A heavy-duty mild steel frame with a round base and strainer provides excellent stability and durability whilst preventing blockages.



### Double Mechanical Seal

A double mechanical seal provides excellent shaft sealing between the hydraulic motor and the wet end. The seals are oil bath lubricated and feature carbon/ceramic seal faces in the wet end and tungsten ceramic faces in the drive end to provide excellent durability and service life across a wide range of duties and applications.

### Oil Chamber Leakage Probe

The oil chamber incorporates a water leakage probe which detects when the water-to-oil ratio is too high and automatically shuts down the motor to prevent damage.

### Motor Float Switch

A float switch is located in the bottom of the motor to detect the ingress of water and shut down the motor to prevent damage due to shorting out.

### Motor Temperature Sensors

Temperature sensors are located in the motor stator to detect excessive temperatures and can shut down the motor to prevent damage due to overheating.

### Thrust Bearing Sensors

Temperature and moisture sensors are located in the motor thrust bearings to detect excessive temperatures and the ingress of water and shut down the motor to prevent bearing failure.

### Optional External Cooling

Cooling jackets can be provided with an external water supply in high-temperature applications to keep the motor temperature down and prevent excessive stator and bearing damage.

[VISIT SITE NOW >>](#)